

Caution:

Don't mark on the phantom with pen or leave printed materials contacted on its surface.
Ink marks on the phantom will be irremovable.

US-14b

Ultrasound Neonatal Head Phantom (Abnormal type)

Instruction Manual

Contents



- Please read before training
 - General information P. 1
- Preparation
 - 1 Before training P. 2
- Training
 - 2 Training session P. 2
 - 3 After training P. 2

This head phantom is designed to demonstrate Hydrocephalus, the shape of the skull is deformed due to intracranial pressure.

The training features include scanning of brain anatomy in sagittal (angled parasagittal), coronal and transverse planes via any fontanels and also palpation of anterior, posterior and mastoid fontanels.

Contained anatomies: skull, anterior fontanel, posterior fontanel, hypertrophied lateral ventricles.

Set includes

Before your first use, please ensure that you have all components listed below.

- a. ultrasound phantom..... 1
- b. positioning pillow.....1
- c. storage case..... 1
- d. instruction manual (this leaflet)



a



b



c

⚠ DOs and DON'T s

DO s

Handle with care

The materials for phantom and models are special composition of soft resin. Please handle with care at all times.

Cleaning and care

Please clean the phantom completely every time after you finish the training. The remaining lubricating gel may deteriorate the phantom.

Keep the training set at room temperature, away from heat, moisture and direct sunlight.

DON'Ts

Never wipe the phantom or models with thinner or organic solvent.

Don't mark on the phantom with pen or leave printed materials contacted on their surface. Ink marks on the models will be irremovable.

Please note: The color of the phantom may change over time, though, please be assured that this is not deterioration of the material and the ultrasonic features of the phantom stay unaffected.

This phantom has a thin layer of coating for protective purposes which may cause minor wrinkling. However, it does not affect quality of ultrasound image.

Preparation Training

1 Before training



1. Set the phantom on the stable place.



2. Spread plenty of lubricant gel on the phantom.

2 Training session



The phantom can be scanned with actual ultrasound devices.

* The map of simulated targets is on the backside of this manual.

3 After training

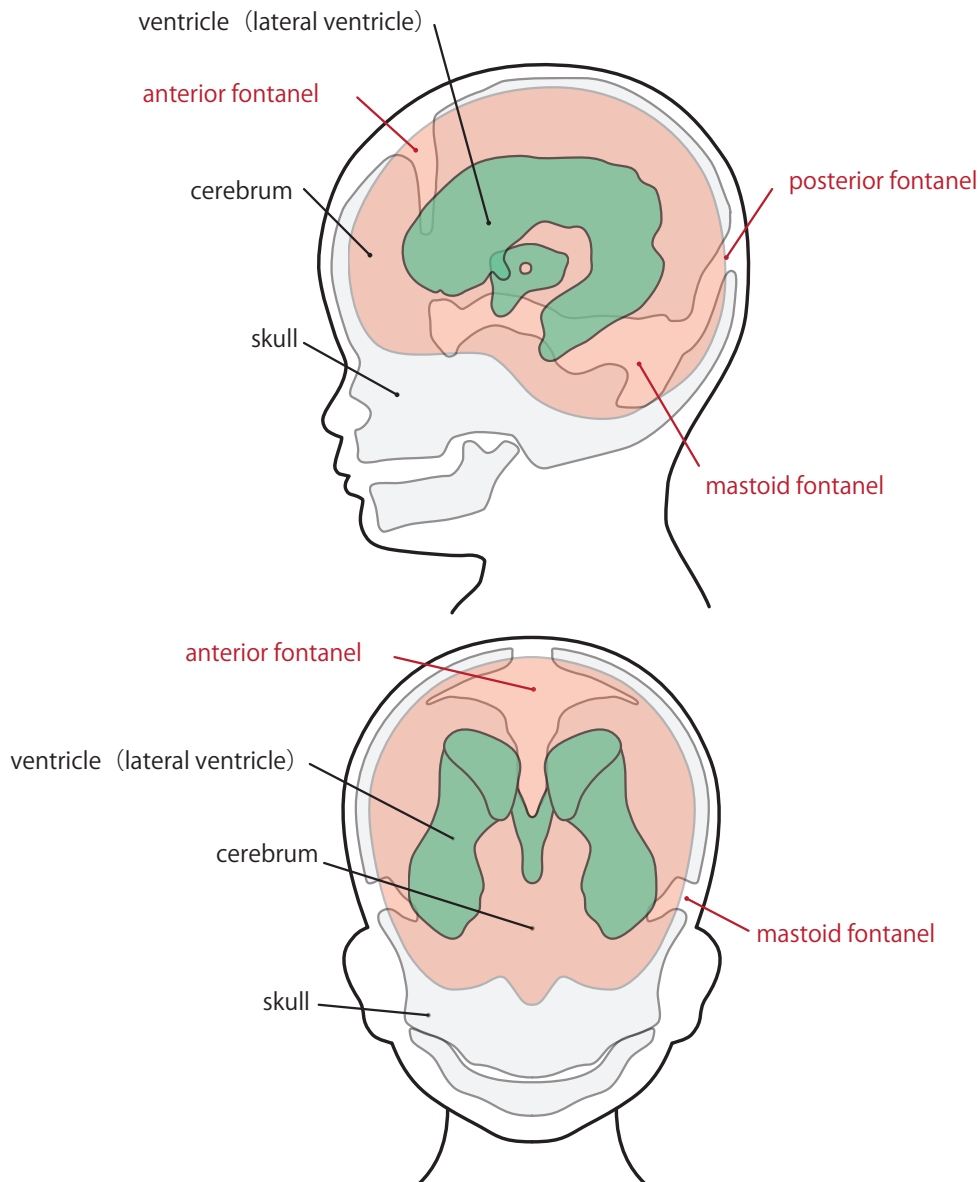


Wipe the remaining gel completely with wet cloth. If remaining gel gets dried up on the body, it will be irremovable.



Caution

Don't mark on the phantom with pen or leave printed materials contacted on its surface.
Ink marks on the phantom will be irremovable.



KYOTO KAGAKU co.,LTD

URL: <http://www.kyotokagaku.com> e-mail: rw-kyoto@kyotokagaku.co.jp

Worldwide Inquiries & Ordering

Kyotokagaku Head Office and Factories:

15 Kitanechoya-cho, Fushimi-ku, Kyoto, 612-8388, JAPAN

Tel: +81-75-605-2510 Fax: +81-75-605-2519

All American regions

KYOTOKAGAKU AMERICA INC.

3109 Lomita Boulevard, Torrance, CA 90505-5108, USA

Tel: 1-310-325-8860 Fax: 1-310-325-8867

The contents of the instruction manual are subject to change without prior notice.

No part of this instruction manual may be reproduced or transmitted in any form without permission from the manufacturer.

Please contact manufacturer for extra copies of this manual which may contain important updates and revisions.

Please contact manufacturer with any discrepancies, typos, or mistakes in this manual or product feedback. Your cooperation is greatly appreciated.



15 Kitanechoya-cho Fushimi-ku
Kyoto, Japan 612-8388
Telephone : +81-75-605-2510
F a x : +81-75-605-2519

Dear customer,

Note

Thank you for choosing our ultra sound phantom.

There may be a case that the surface of phantom is in a wet condition.

The ultra sound image will not be affected. In such case, wipe the surface with medical use alcohol. **Do not wipe the surface with strong solvent such as benzene.**

If you have any questions regarding this matter, please do not hesitate to contact us at any time.

Faithfully yours,

Kyoto Kagaku Co., Ltd.

Email: rw-kyoto@kyotokagaku.co.jp