

US-16

Intravesical Urine Volume Measurement Training Simulator

Instruction Manual

Product Supervision:
Hirosaki University
School of Medicine&Hospital
Department of General Medicine
Tadashi Kobayashi

Contents



- Please read
General information P.1
- Training procedure
Before training/Training session/After training ... P.2
- Training sessionP.3

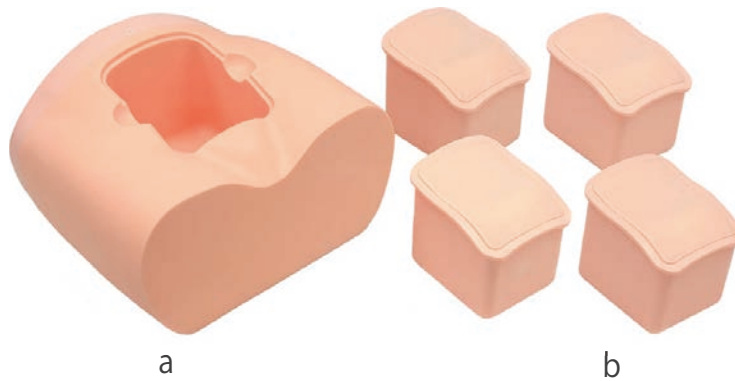
This simulator is designed to facilitate training in measurement of urine residue in the bladder using ultrasound.

- 4 variations of interchangeable inserts feature different patient scenarios.
- Suitable for training in assessment with pocket-type echo in home care setting.
- Effective hands-on tool for rehearsing multi-professional approach for restoration of the urinary tract function.

Set includes:

Before your first use, please ensure that you have all components listed below.

- a. Lower torso manikin 1
- b. phantom Carrying case 4
- Instruction manual (this leaflet) 1



⚠ DOs and DON'Ts

DO s

Handle with care.

The materials for phantom are special composition of resin. Please handle with care at all times.

Cleaning and care

Clean the phantom completely every time after the training.

The remaining gel may deteriorate the phantom.

Keep the phantom at room temperature, away from heat, moisture and direct sunlight.

DON'Ts

Never wipe the phantom with thinner or organic solvent.

Don't mark on the phantom with pen or leave printed materials contacted on their surface. Ink marks on the surface will be irremovable.

Please note: The color of the phantom may change over time, though, please be assured that this is not deterioration of the material and the ultrasonic features of the phantom stay unaffected.

Preparation Training

1 Before training



1. Set the phantom on a stable surface.



2. Spread lubricant gel on the phantom body.

2 Training session



The phantom can be scanned with actual ultrasound devices.

* The map of simulated targets is on the backside of this manual.

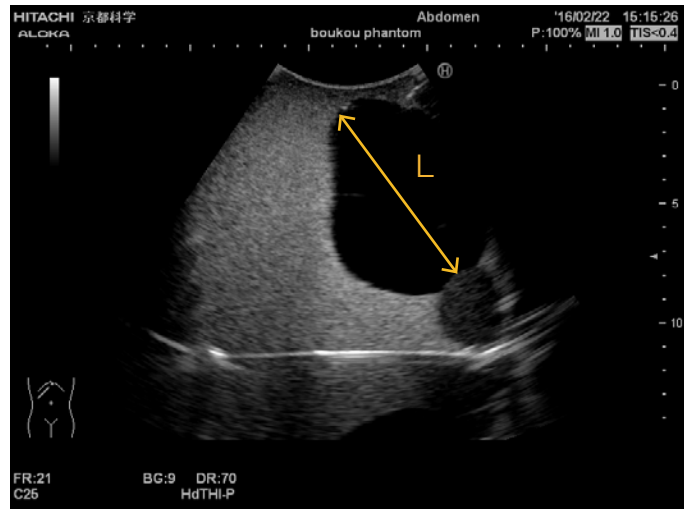
3 After training



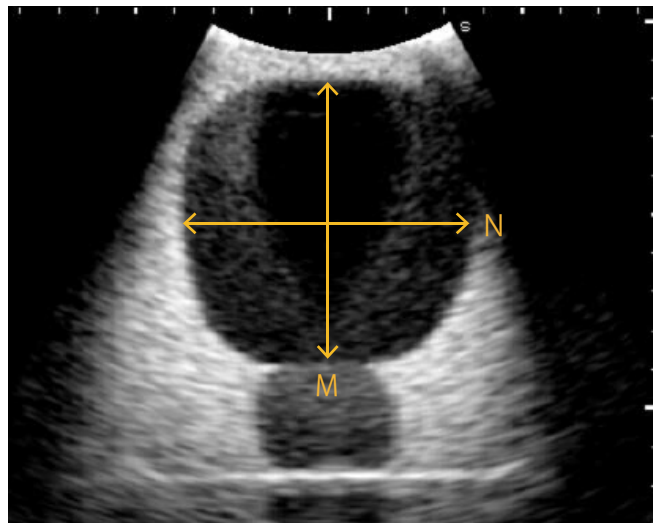
Wipe the remaining gel completely with wet cloth. If remaining gel gets dried up on the body, it will be irremovable.

1 Training session

1. Sagittal plane: measure the maximum internal diameter of the bladder (L)



2. Transverse plane: measure the maximum internal vertical diameter (M)
*depth and transverse diameter (N) *width of the bladder.



Calculation of urine residue volume

L: maximum internal diameter of the bladder in sagittal plane

M: maximum internal vertical diameter (depth) in transverse plane which includes maximum bladder width

N: maximum internal transvers diameter (width) in transverse plane which includes maximum bladder width

$L \times M \times N \times 1/2 \cong$ urine residue volume
Urinary retention



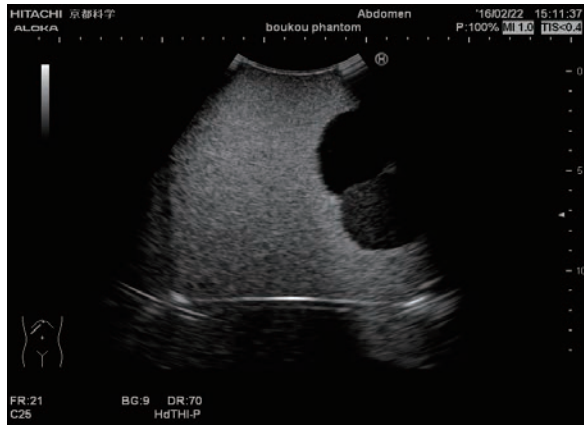
Caution

Do not mark on the phantom with pen or leave printed materials contacted on its surface. Ink marks on the phantom will be irremovable.

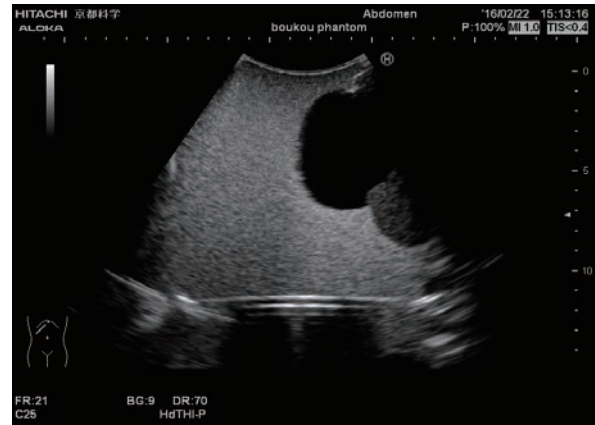
The contents of this manual are subject to change without prior notice.

No part of this instruction manual may be reproduced or transmitted in any form without permission from the manufacturer. Please contact manufacturer for extra copies of this manual which may contain important updates and revisions.

Please contact manufacturer with any discrepancies, typos, or mistakes in this manual or product feedback. Your cooperation is greatly appreciated.



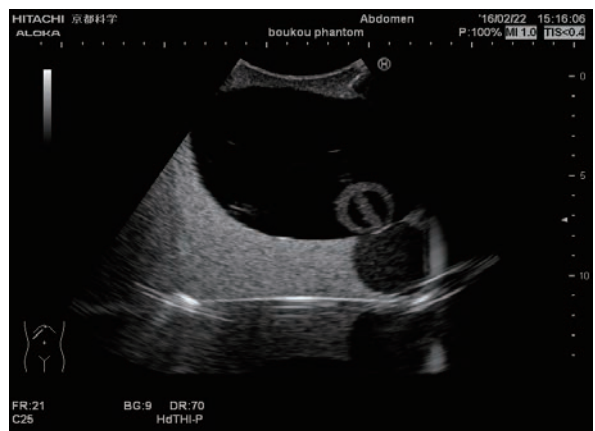
50m l



150m l



300m l



urinary retention



KYOTO KAGAKU co.,LTD

URL:<http://www.kyotokagaku.com> e-mail:rw-kyoto@kyotokagaku.co.jp

Worldwide Inquiries & Ordering

Kyotokagaku Head Office and Factories:

15 Kitanechoya-cho, Fushimi-ku, Kyoto, 612-8388, JAPAN

Tel: +81-75-605-2510 Fax: +81-75-605-2519

Kyotokagaku America Inc. : USA, Canada, and South America

3109 Lomita Boulevard, Torrance, CA 90505-5108, USA

Tel: 1-310-325-8860 Fax: 1-310-325-8867



15 Kitanechoya-cho Fushimi-ku
Kyoto, Japan 612-8388
Telephone : +81-75-605-2510
F a x : +81-75-605-2519

Dear customer,

Note

Thank you for choosing our ultra sound phantom.

There may be a case that the surface of phantom is in a wet condition.

The ultra sound image will not be affected. In such case, wipe the surface with medical use alcohol. **Do not wipe the surface with strong solvent such as benzene.**

If you have any questions regarding this matter, please do not hesitate to contact us at any time.

Faithfully yours,

Kyoto Kagaku Co., Ltd.

Email: rw-kyoto@kyotokagaku.co.jp