

Caution:

Don't mark on the phantom with a pen or leave printed materials contacted on its surface.
Ink marks on the phantom will be irremovable.



Instruction
Manual



Contents

- Components and handling precautions P.1
- Examination and cleaning..... P.2
- Ultrasound image Back Cover

Thank you for choosing our Rheumatism Hand Phantom.

This phantom is designed for a training of ultrasound imaging that is helpful for early diagnosis of articular rheumatism. For effective training, use ultrasound devices that is under appropriate control.

Features

- Training of ultrasound imaging of bones of finger joints and articular rheumatism symptoms.
- Hyperplasia of synovial membrane and condition of increase of synovial fluid are reproduced.

Including items

Check the following including items before using.

- A) Rheumatism Hand Phantom 1
- B) Carrying Case 1
- C) Talcum Powder 1
- D) Instruction Manual..... 1



a



b



c

Cautions

This phantom is made of soft material, so strong impact caused by fall so on may cause the damage.

Immediately after training, wipe out gel on the phantom with wet tissue etc.

*Never use any organic solvent such as thinner to wipe out gel.

Don't mark on the phantom with a pen or leave printed materials contacted on its surface. Ink marks on the phantom will be irremovable.

The color of the surface may change when used for a long time. This color change does not affect ultrasound image.

To avoid the damage of the phantom, please handle the phantom with care.

After use, keep the phantom away from heat, humidity and direct sunlight. These may cause damage of the phantom.

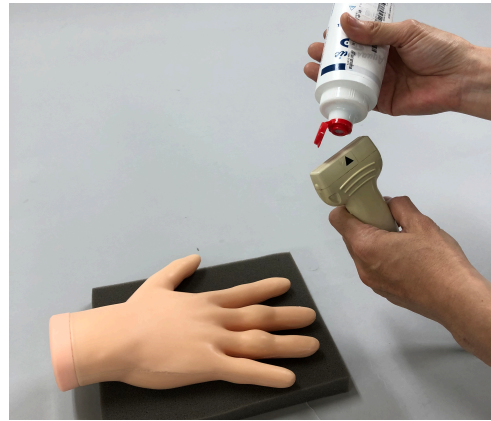
Do not bend, pull or screw the fingers of phantom.

Do not pick the surface layer of the phantom with your fingers.

1 Preparation

This phantom is designed to allow training in scanning fingers from both the palm side and the back side of the hand.

To avoid the damage of the phantom, please lay a soft rug under the phantom while the training.



Apply gel for ultrasound to the probe.

2 Training

Scanning the phantom with a transducer.

Training points

- Setting for ultrasonography of rheumatism and holding of probe.
- Positioning
- Selection and operation of a transducer.
- Visualization of synovial membrane hyperplasia.
- Interpretation and classification of ultrasound images.



3 Cleaning

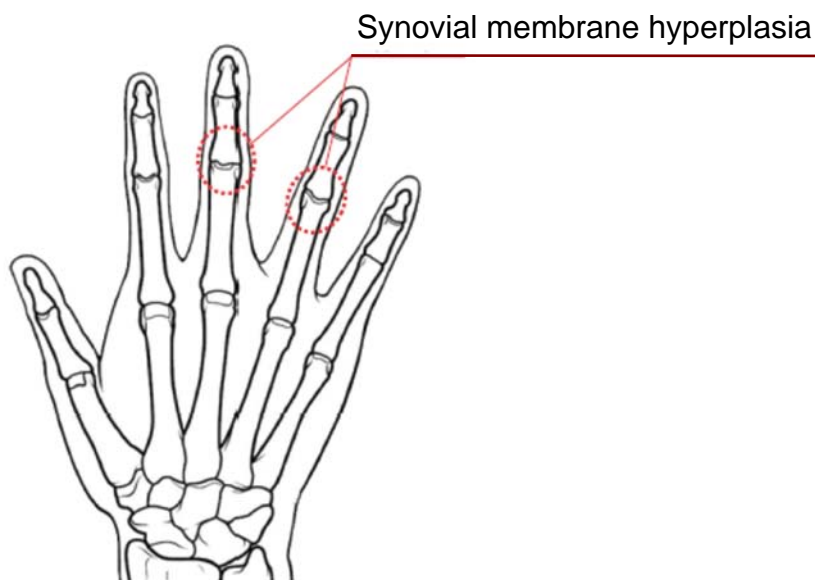
Wipe out gel on the phantom.

*Dried residue of gel may affect ultrasound images and cause damage of the surface of the phantom.

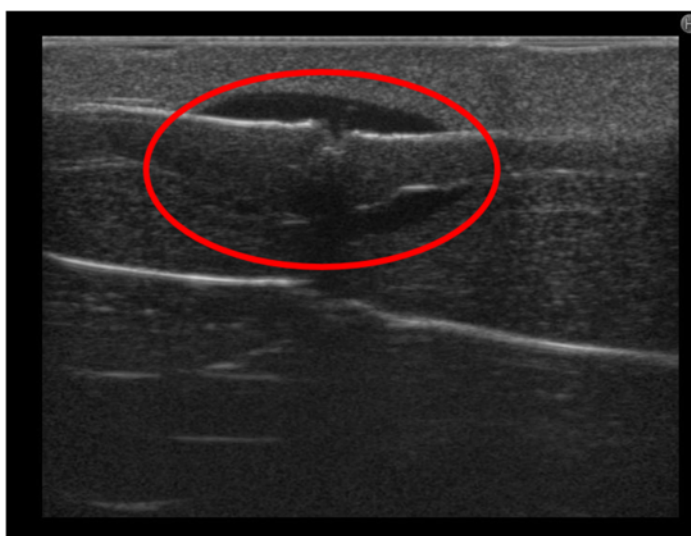


Caution

Don't mark on the phantom with a pen or leave printed materials contacted on its surface. Ink marks on the phantom will be irremovable



Ultrasound image of a joint of the phantom



 **KYOTO KAGAKU co.,LTD**

Kyoto Kagaku Co., Ltd Head Office.

15 Kitanechoya-cho Fushimi-ku Kyoto, Japan 612-8388

Telephone:+81-75-605-2510 Fax:+81-75-605-2519

Email:rw-kyoto@kyotokagaku.co.jp

 **KKAmerica**
Kyoto Kagaku America Inc.

Kyoto Kagaku America Inc.

3109 Lomita Boulevard, Torrance,

CA 90505-5108,USA

Telephone:1-310-325-8860 Fax:1-310-325-8867

Email:rw-kyoto@kyotokagaku.co.jp

Kyoto Kagaku Co., Ltd. European Representative Office

De-Saint-Exupery-Str.10, 60549 Frankfurt, Germany

Telephone:069-5060-28160 Fax:069-5060-28170



15 Kitanechoya-cho Fushimi-ku
Kyoto, Japan 612-8388
Telephone : +81-75-605-2510
F a x : +81-75-605-2519

Dear customer,

Note

Thank you for choosing our ultra sound phantom.

There may be a case that the surface of phantom is in a wet condition.

The ultra sound image will not be affected. In such case, wipe the surface with medical use alcohol. **Do not wipe the surface with strong solvent such as benzene.**

If you have any questions regarding this matter, please do not hesitate to contact us at any time.

Faithfully yours,

Kyoto Kagaku Co., Ltd.

Email: rw-kyoto@kyotokagaku.co.jp