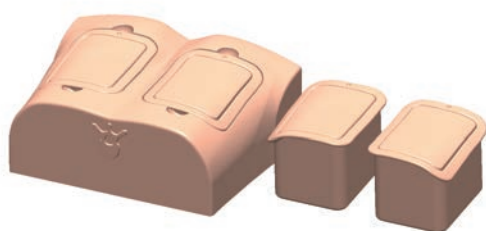


# Lung Ultrasound Training Phantom ECHOLUNG

41946-999 Basic set



Product Supervision:  
Hirosaki University  
School of Medicine&Hospital  
Department of General Medicine  
Tadashi Kobayashi



## Contents

- Before training  
General Information ..... P. 1
- Training/ after use ..... P. 2
- Phantom ultrasound images ..... P. 3 P. 4

This phantom is designed to facilitate training of lung ultrasound using actual ultrasound devices.

Please do NOT use this phantom outside of its purposes

### ● Features

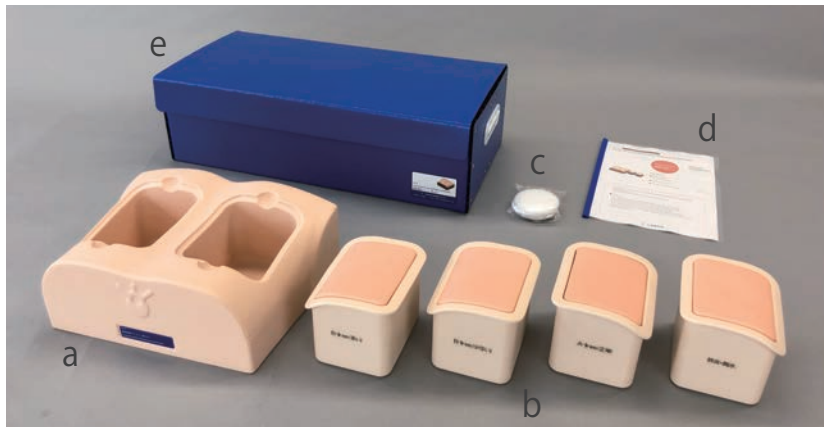
- Four different kind of modules with different symptoms, A-Lines, B-Lines(few), B-Lines(many) and pneumonia/pleural effusions. and anatomical model of the body to simulate lung ultrasound.
- Each module simulates accurate anatomies of ribs, pleura and lungs.
- Materials whose ultrasound acoustic characteristics close to human body are used in the phantom.

## Set includes

Before use, please make sure all the items below are included in the set

### ●Set includes

- |  |        |                             |   |
|--|--------|-----------------------------|---|
| a. Body .....                                  | 1      | c. Talcum powder .....      | 1 |
| b. 4 kind of modules .....                     | 1 each | d. Instruction manual ..... | 1 |
| Right : A-lines、Pnuemonia and pleural effusion |        | e. Storage case .....       | 1 |
| Left : B-lines(few)、B-lines(many)              |        |                             |   |



## ⚠ Cautions

### ● Handle with care.

The materials for phantom are special composition of resin. Please handle with care at all times.

●The color of the phantom may change over time, though, please be assured that this is not deterioration of the material and the ultrasonic features of the phantom stay unaffected.

●Don't mark on the phantom with pen or leave printed materials contacted on their surface. Ink marks on the surface will be irremovable.

●Keep the phantom at room temperature, away from heat, moisture and direct sunlight.

● Wipe off the ultrasonic jelly by wet tissues soon after use.

※Never wipe the phantom with thinner or organic solvent.

## 1 Preparation



1. Set the body and four kind of modules to stable place.



2. Apply the ultrasonic jelly directly to the cube model

## 2 Training



The phantom can be scanned with actual ultrasound devices. The cases can be changed by exchanging the modules.

※ Please refer to page 3. and 4. for the ultrasound images and simulated targets.

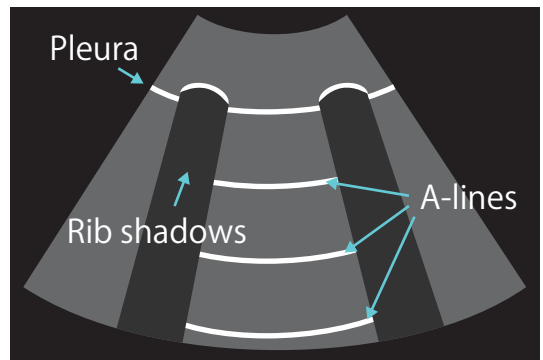
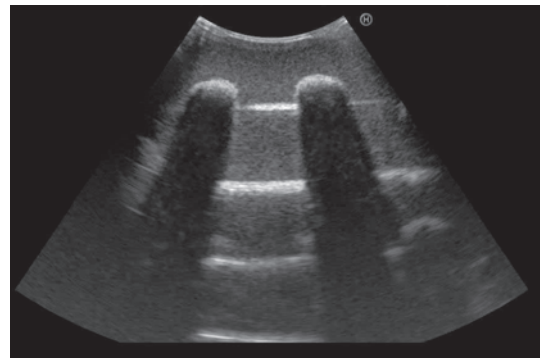
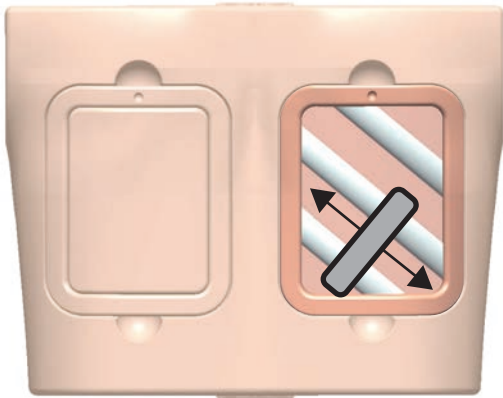
## 3 After training



Wipe the remaining gel completely with wet cloth. If remaining gel gets dried up on the body, it will be irremovable.

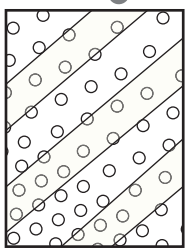
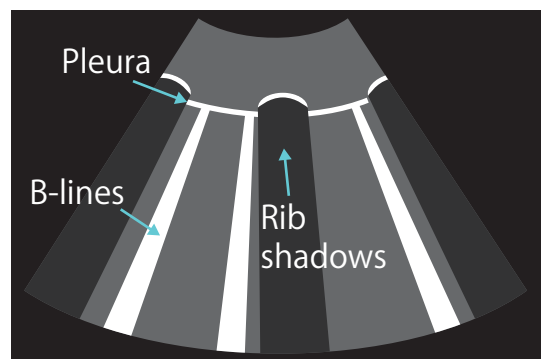
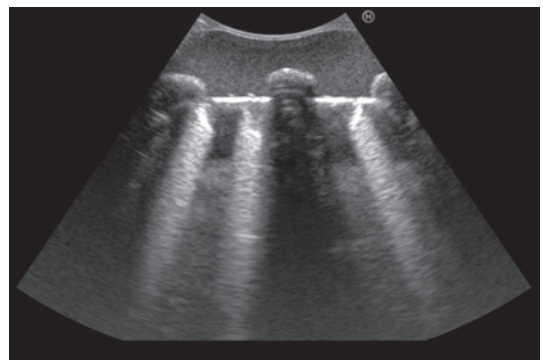
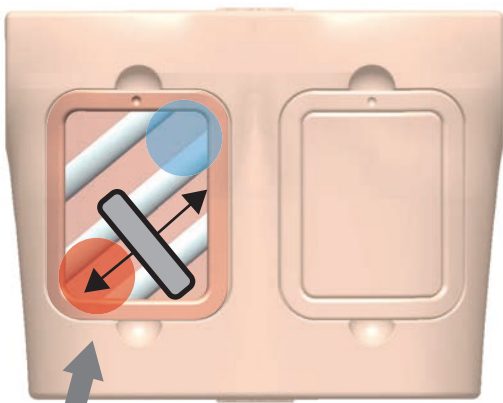
## 1 A-lines (Normal)

Right cube A-LINE in all area



## 2 B-lines (few)

left cube



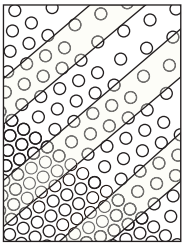
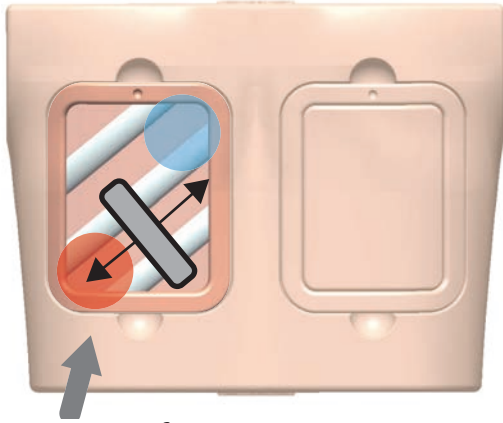
Upper right side (blue) has more BLINES than lower left side (red)

many

※○ sign represents the beam

### 3 B-lines (many)

Left cube

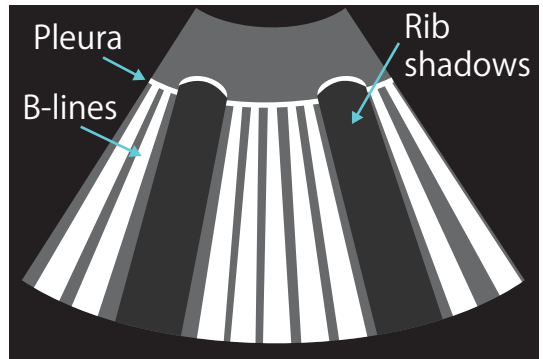
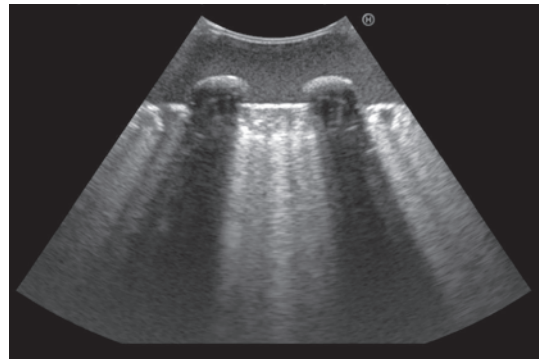


few

Upper right side (blue) has more BLINES than lower left side (red)

※○ sign represents the beam

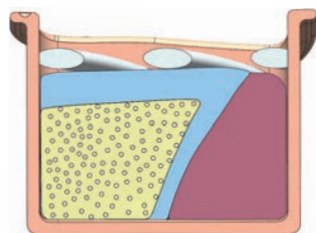
many



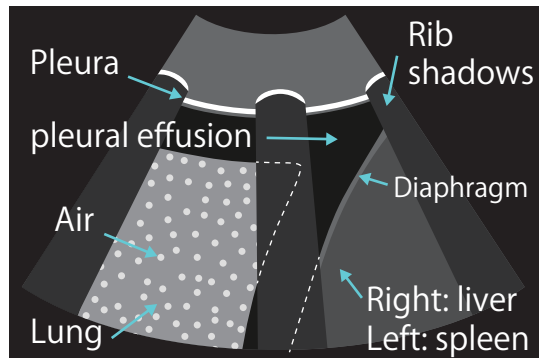
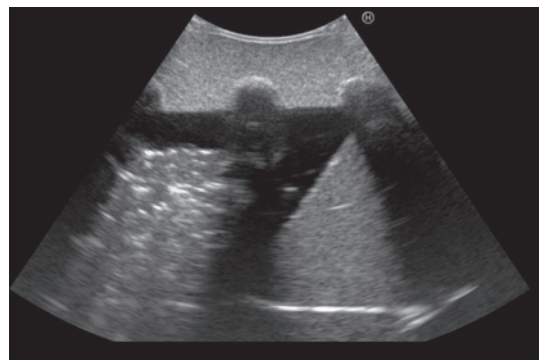
### 4 Pneumonia and pleural effusion

Right cube

pneumonia image close to atelectasis



Cross section





## Caution

Do not mark on the phantom with pen or leave printed materials contacted on its surface.  
Ink marks on the phantom will be irremovable.

## **KYOTO KAGAKU co.,LTD**

URL:<http://www.kyotokagaku.com> e-mail:[rw-kyoto@kyotokagaku.co.jp](mailto:rw-kyoto@kyotokagaku.co.jp)

---

### Worldwide Inquiries & Ordering

Kyotokagaku Head Office and Factories:

15 Kitanechoya-cho, Fushimi-ku, Kyoto, 612-8388, JAPAN

Tel: +81-75-605-2510 Fax: +81-75-605-2519

Kyotokagaku America Inc. : USA, Canada, and South America

3109 Lomita Boulevard, Torrance, CA 90505-5108, USA

Tel: 1-310-325-8860 Fax: 1-310-325-8867



15 Kitanechoya-cho Fushimi-ku  
Kyoto, Japan 612-8388  
Telephone : +81-75-605-2510  
F a x : +81-75-605-2519

Dear customer,

**Note**

Thank you for choosing our ultra sound phantom.

There may be a case that the surface of phantom is in a wet condition.

The ultra sound image will not be affected. In such case, wipe the surface with medical use alcohol. **Do not wipe the surface with strong solvent such as benzene.**

If you have any questions regarding this matter, please do not hesitate to contact us at any time.

Faithfully yours,

Kyoto Kagaku Co., Ltd.

Email: [rw-kyoto@kyotokagaku.co.jp](mailto:rw-kyoto@kyotokagaku.co.jp)