

US-1

Ultrasound Examination Training Model "ECHOZY"

Production supervision:
Dr.Hitoshi Asai, Director
Osaka Kyoiku University, Health Administration Center
Dr.Shigeru Nakamura
Nagayashi General Hospital Clinical Examination Department

Caution:

Don't mark on the phantom with pen or leave printed materials contacted on its surface.
Ink marks on the phantom will be irremovable.

Instruction Manual

Contents



- Please read before training
General information P. 1
- Preparation
1 Befor training P. 2
- Training
2 Training session P. 2
3 After training P. 2

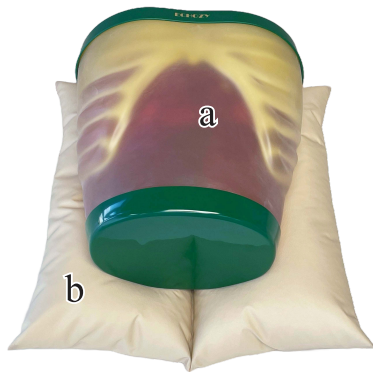
Unique high-fidelity ultrasound phantom facilitates effective training in abdominal ultrasound scanning with your own clinical devices.

● Features

- Inanimate tool for training of a novice to demonstration by an expert.
Any ultrasound device with a convex probe can be used for the phantom.
- Detailed hepatobiliary, pancreatic and other abdominal anatomy meeting requirement for excellent training; Eight Couinaud's hepatic segments can be localized.
- Near real-size organs, structures and abnormal lesions.
- Durable long-life phantom materials.

Set includes

Before your first use, please ensure that you have all components listed below.



- a. Ultrasound abdominal phantom** 1
the liver (segmental anatomy, portal and hepatic venous systems, ligamentum teres and ligamentum venosum),
biliary tract (gallbladder, cystic duct, intrahepatic and extrahepatic bile ducts),
pancreas (pancreatic duct), spleen, kidneys,
detailed vascular structures (aorta, vena cava, celiac artery and its branches, portal vein and its branches, superior mesenteric vessels, renal vessels, etc)
- b. Positioning pillow** 1
- c. Talcum powder** 1

The setting of supine position and the lateral position is possible using a positioning pillow.



To maintain the body coat layer, lay down the phantom on the PILLOW included in the product, when scanning.

To enable easy maintenance and to enhance the durability, this phantom has a coat layer.

Friction between this coat layer and a board causes the damage to the coat layer, so **do not rotate the phantom on a hard board such as a desk.**

⚠ DOs and DON'T s

DO s

Handle with care.

The materials for phantom and models are special composition of soft resin.

Please handle with care at all.

Cleaning and care

Please clean the phantom completely every time after you finish the training.

The remaining lubricant gel may deteriorate performance of the phantom.

Keep the training set at room temperature, away from heat, moisture and direct sunlight.

DON'T s

Never wipe the phantom or models with thinner or organic solvent.

Don't mark on the phantom with pen or leave printed materials contacted on their surface.

Ink marks on the models will be irremovable.

Please note: The color of the phantom may change over time, though, please be assured that this is not deterioration of the material and the ultrasonic features of the phantom stay unaffected.

This phantom has a thin layer of coating for protective purposes which may cause minor wrinkling. However, it has no effect on the ultrasound image.



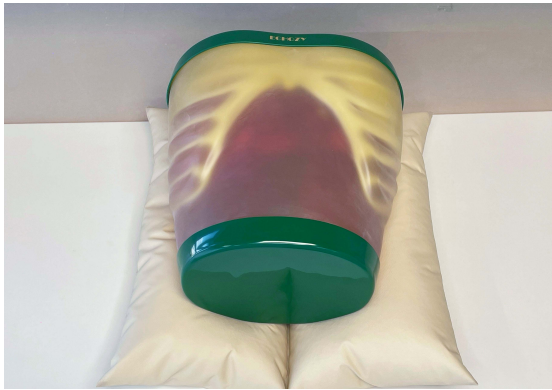
Please watch the following movie about handling precautions of ultrasound phantoms.

<https://www.youtube.com/watch?v=D3VcaUYcPAY>

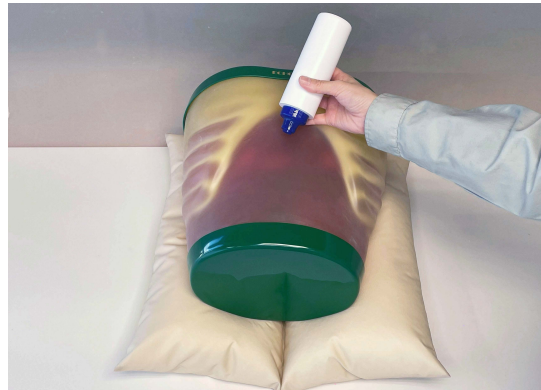
Preparation Training

Simulated targets/ Storage

1 Before training

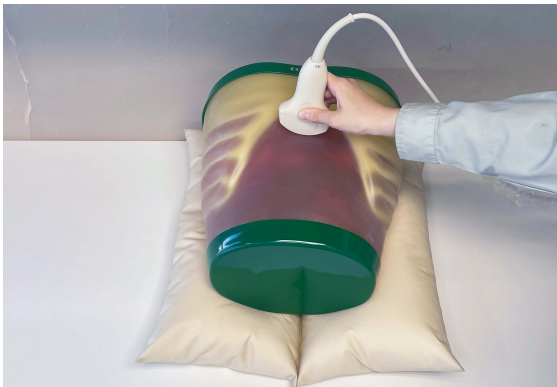


1. Place the phantom stably on the positioning pillow.



2. Spread lubricant gel on the phantom body.

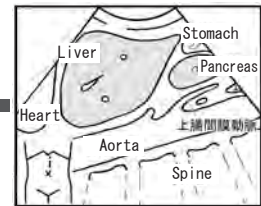
2 Training session



The phantom can be scanned with real ultrasound devices.



Midsagittal plane



Liver



Kidney

3 After training



Wipe the remaining gel completely by wet cloth.

If remaining gel gets dried up on the body, it may cause scratches and tears on the phantom material.



Caution

Don't mark on the phantom with pen or leave printed materials contacted on its surface.
Ink marks on the phantom will be irremovable.

The contents of this manual are subject to change without prior notice.

No part of this instruction manual may be reproduced or transmitted in any form without permission from the manufacturer. Please contact manufacturer for extra copies of this manual which may contain important updates and revisions.

Please contact manufacturer with any discrepancies, typos, or mistakes in this manual or product feedback. Your cooperation is greatly appreciated.

KYOTO KAGAKU co.,LTD

URL:<http://www.kyotokagaku.com> e-mail:rw-kyoto@kyotokagaku.co.jp

■ Main Office and Factory

15 Kitanechoya-cho Fushimi-ku Kyoto 612-8388, Japan
Telephone : 81-75-605-2510
Facsimile : 81-75-605-2519

■ KyotoKagaku America Inc.

USA,Canada,and South America
3109 Lomita Boulevard, Torrance, CA 90505 ,USA
Telephone : 1-310-325-8860
Facsimile : 1-310-325-8867



15 Kitanechoya-cho Fushimi-ku
Kyoto, Japan 612-8388
Telephone : +81-75-605-2510
F a x : +81-75-605-2519

Dear customer,

Note

Thank you for choosing our ultra sound phantom.

There may be a case that the surface of phantom is in a wet condition.

The ultra sound image will not be affected. In such case, wipe the surface with medical use alcohol. **Do not wipe the surface with strong solvent such as benzene.**

If you have any questions regarding this matter, please do not hesitate to contact us at any time.

Faithfully yours,

Kyoto Kagaku Co., Ltd.

Email: rw-kyoto@kyotokagaku.co.jp