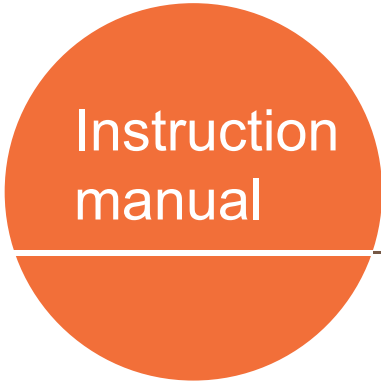
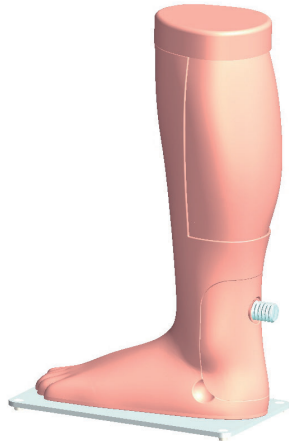


US-21

Caution:
Don't mark on the phantom with pen or leave
printed materials on its surface.
Ink marks on the phantom will be irremovable.

DVT (Deep Vein Thrombosis) Phantom

• Product Supervision:
Kenji Karino, Professor, Clinical Skill-Up Center,
Shimane University Hospital



Contents

- General Information
Set includes, cautionary advice P. 1
- Training and Cleanup P. 2、3

This phantom was produced for training in ultrasound screening for Deep Vein Thrombosis.

Please use a calibrated ultrasound device when training on this phantom.

- Features
 - This phantom uses a material with an attenuation rate close to the human body.
 - Realistic depiction of branching blood vessels and blood clots.
 - The built-in blood vessels allow for milking by applying pressure with a transducer.
 - Learn how to use the probe to scan the blood vessels along the leg.
 - Use your own ultrasound device to train any time.

Set includes

Please check beforehand if all components are complete.

● Contents

- a. lower limb manikin 1
- b. ultrasound calf phantom (incorporated) .. 1
- c. talcum powder 1
- d. instruction manual 1
- e. storage case..... 1



⚠ Caution

● Handle with care

The materials for the phantom and model are a composition of soft resin. Please handle with care at all times.

● Cleaning and Care

Please clean the phantom completely every time after you finish the training. The remaining gel may deteriorate the phantom.

**Do not use organic solvent such as thinner*

● Do not leave printed materials on the phantom

Any ink on the phantom will be irremovable.

● The phantom may change color

It may discolor if not used for a long period of time or with age but this does not affect its functionality.

● Do not write on the phantom

Any writing or markings on the phantom will be irremovable.

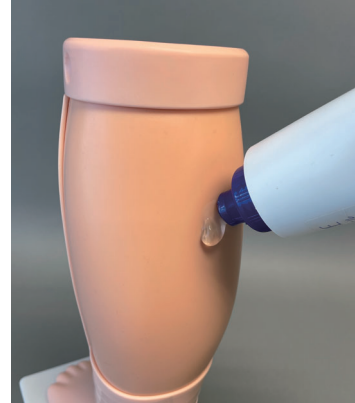
● Storage conditions

Keep away from heat, moisture and direct sunlight.

1 Preparation

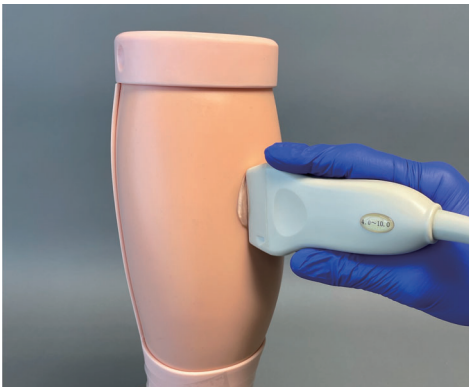


1) Place the phantom on a level surface.



2) Apply ultrasound gel to the phantom.

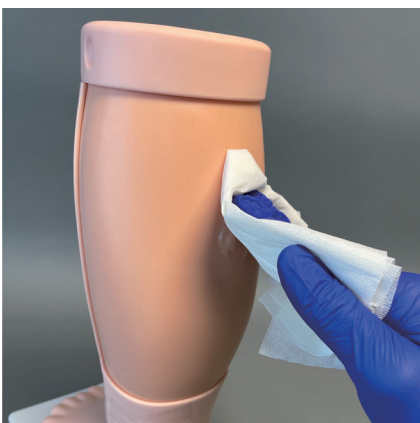
2 Imaging



- 1) Press the transducer on the phantom and start imaging.
- 2) Try visualizing the meandering and branching blood vessels, blood clumps and use the milking method.

* Please refer to the layout image

3 Cleanup



- 1) Wipe any remaining gel off the phantom with a wet tissue or something similar.

* Dried up remaining gel might damage the surface or influence the ultrasound image.

1 Preparation



1) Remove the cover on the bottom of the model.

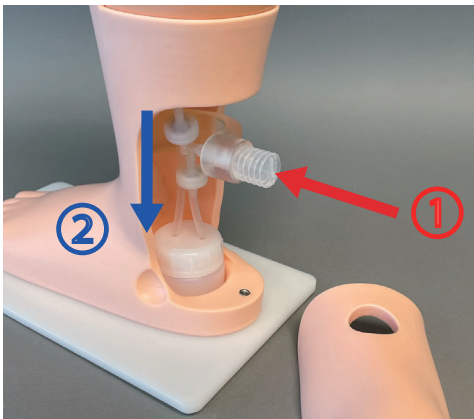


2) Fill the bottle with water up to the marking.



3) Insert both tubes through the holes into the bottle.

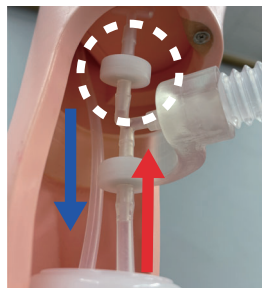
2 Filling the phantom



1) Press the accordion-shaped pump a few times to fill with water.

2) Preparations are ready when the tube on the back is filled.

※ Don't use too much force when pressing the pump.



■ Direction of water flow
 red arrow : filling
 blue arrow : draining
 white marker : one-way valve

3 Detaching the phantom



1) Remove the pump.



2) Remove the top lid.



3) Remove the phantom part.



4) Phantom part

*Remove all water from the system before storing



Caution

Do not leave any printed materials such as this instruction manual on the phantom. Any ink on the phantom will be irremovable.

■ USA, Canada, and South America



WEB • www.kkamerica-inc.com

E-MAIL • info@kkamerica-inc.com

TEL : 1-310-325-8860 FAX : 1-310-325-8867

3109 Lomita Boulevard, Torrance, CA 90505-5108, USA

■ Europe, Russia & Africa

Kyoto Kagaku Europe GmbH.

TEL : +49-69-5060-28160

De-Saint-Exupery-Str.10,60549 Frankfurt, Germany

■ Worldwide Inquiries and Orders

☐ KYOTO KAGAKU co.,LTD

URL: <http://www.kyotokagaku.com> e-mail: rw-kyoto@kyotokagaku.co.jp

TEL : +81-75-605-2510 FAX : +81-75-605-2519

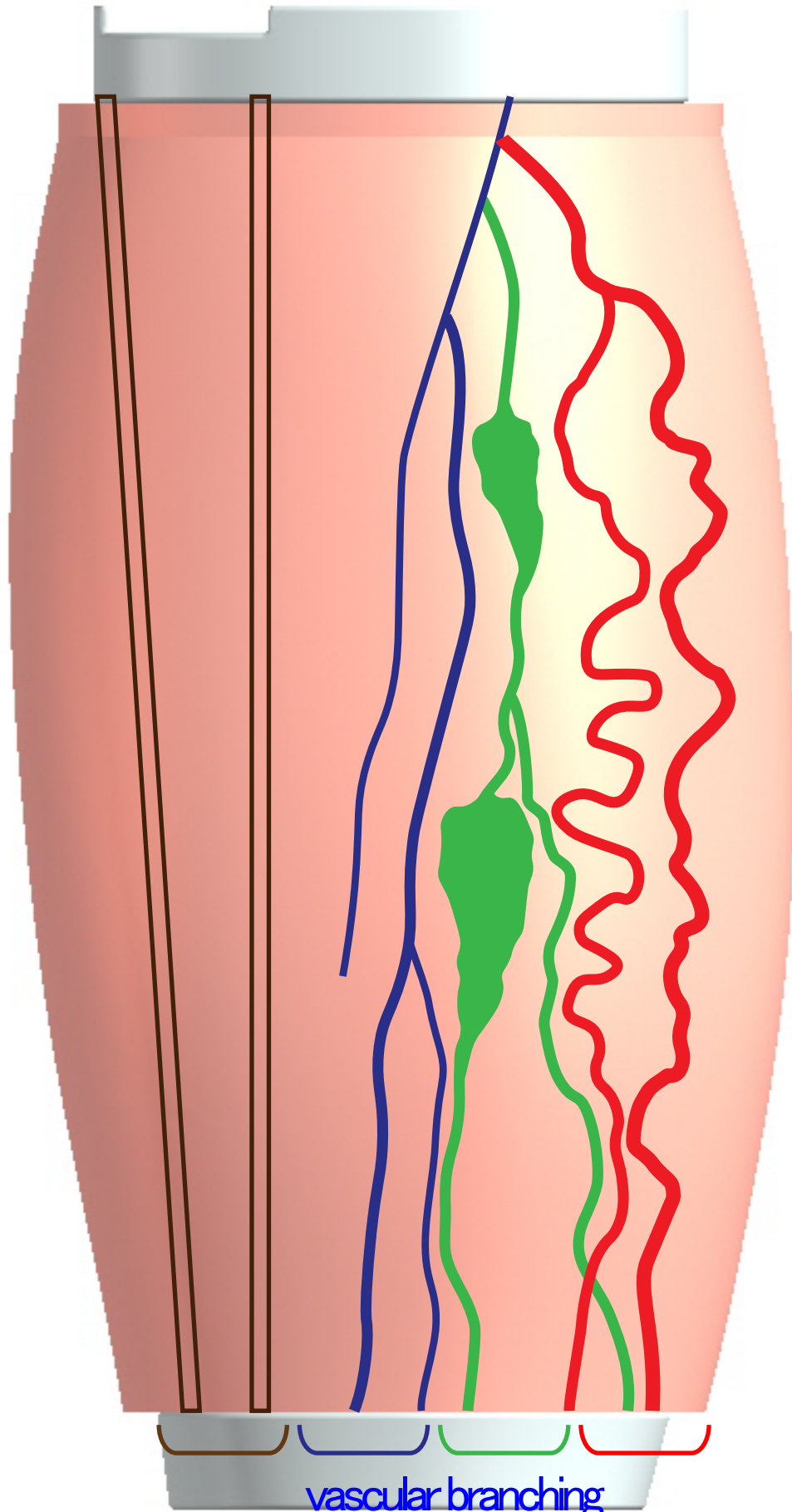
15 Kitanechoya-cho, Fushimi-ku, Kyoto, 612-8388, JAPAN

The contents of the instruction manual are subject to change without prior notice.

No part of this instruction manual may be reproduced or transmitted in any form without permission from the manufacturer. Please contact manufacturer for extra copies of this manual which may contain important updates and revisions.

Please contact manufacturer with any discrepancies, typos, or mistakes in this manual or product feedback. Your cooperation is greatly appreciated.

US-21 DVT (Deep Vein Thrombosis) Phantom Vascular map



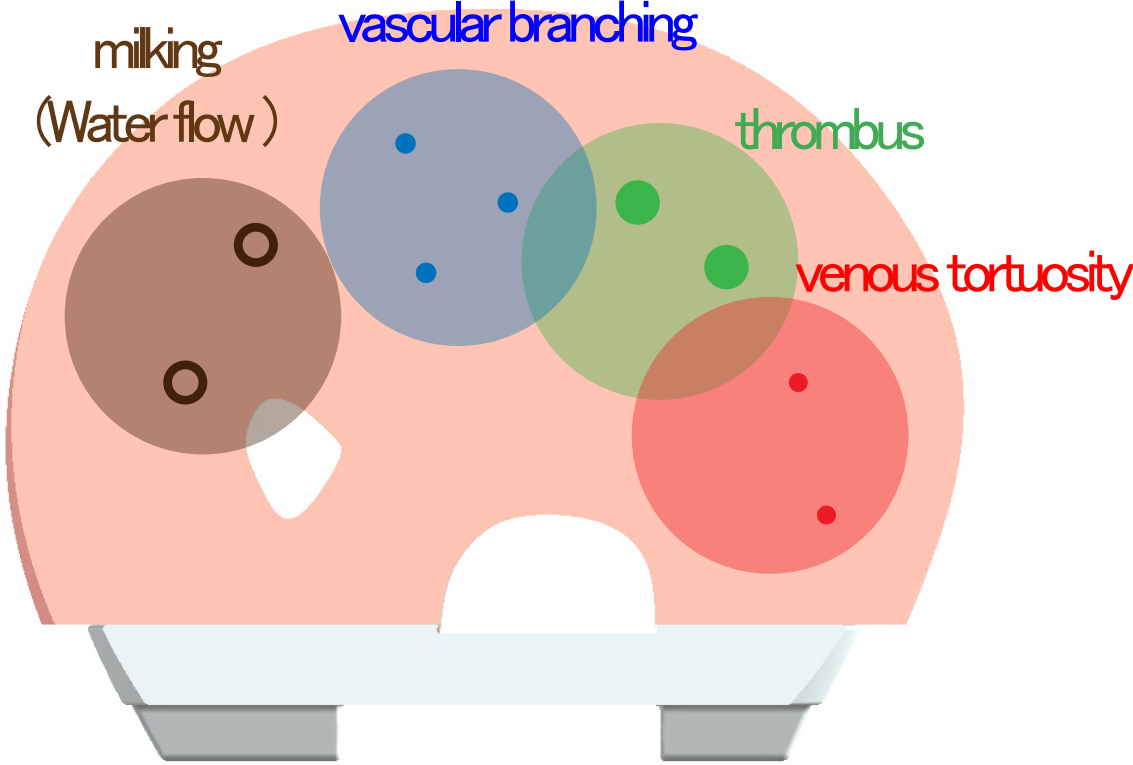
milking
(Water flow)

vascular branching

thrombus

venous tortuosity

US-21 DVT (Deep Vein Thrombosis) Phantom Vascular map





15 Kitanechoya-cho Fushimi-ku

Kyoto, Japan 612-8388

Telephone : +81-75-605-2510

F a x : +81-75-605-2519

Dear customer,

Note

Thank you for choosing our ultra sound phantom.

There may be a case that the surface of phantom is in a wet condition.

The ultra sound image will not be affected. In such case, wipe the surface with medical use alcohol. **Do not wipe the surface with strong solvent such as benzene.**

If you have any questions regarding this matter, please do not hesitate to contact us at any time.

Faithfully yours,

Kyoto Kagaku Co., Ltd.

Email: rw-kyoto@kyotokagaku.co.jp