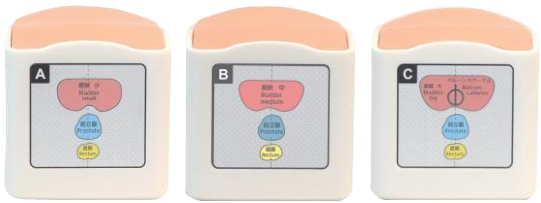
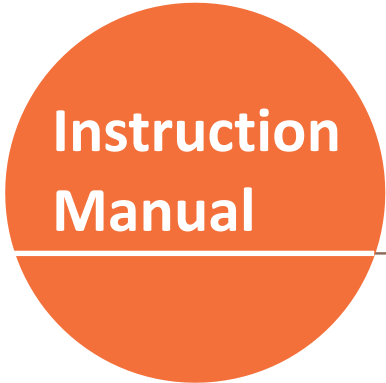


Rectal and Bladder Ultrasound Phantom

● Product Supervision

Hiroimi Sanada, RN, PhD, WOCN, FAAN President,
 Ishikawa Prefectural Nursing University
 Masaru Matsumoto, Ast. Professor Ishikawa Prefectural Nursing University



Contents

- General Information P. 1
- Preparation, Imaging, Clean-up P. 2
- Training - Anatomical Images P. 3
- Training - Ultrasound Images P. 4
- Training - Probe Placement P. 5

This Rectal and Bladder Ultrasound Phantom can be used with a real ultrasound device.

※For effective training, use a calibrated ultrasound device.

※This phantom is meant for use in medical training.

Please do NOT use this phantom for other purposes than the intended.

● Specifications

- This phantom is made of a material that has very similar properties to the human body.
- Includes residual stool inside the rectum, as well as bladder, prostate and pubic bone.
- Scan the bladder (small / middle / large with balloon catheter) and measure residual urine volume.
- The rectum (hard stool / soft stool / hard and soft stool, empty rectum) can be viewed.

General Information

Set includes

Please make sure all parts are included.

- a. Unit A 1
- b. Unit B 1
- c. Unit C 1
- d. Talcum powder 1
- e. Instruction manual 1
- f. Storage case 1



⚠ Caution

● Handle with care

This phantom is made from a special composition of resin. Please handle with care to avoid any damage.

● Cleaning and Care

Please clean the phantom completely every time after finishing the training. Any remaining gel may deteriorate the phantom.

*** Never wipe the phantom with thinner or organic solvent.**

● Do not leave printed documents on the surface

Ink may stick to the phantom and will be irremovable.

● Discoloring may occur

This phantom may change color over time. This does however not impact the performance.

● Do not write on the phantom

Any ink on the phantom will be absorbed and become irremovable.

● Correct storage conditions

Keep the phantom at room temperature, away from heat, moisture and direct sunlight.

1 Preparation

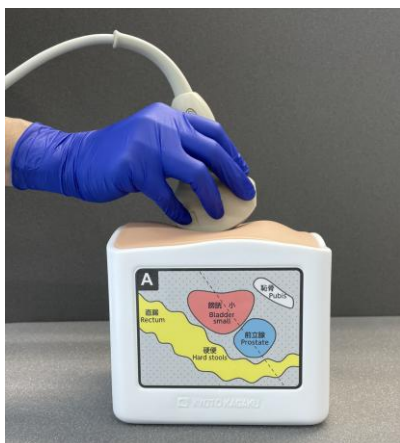


① Place the body and phantom on a stable surface.



② Put ultrasound gel directly on the phantom.

2 Imaging



① Apply the probe to the phantom.

② Scan for the rectum, bladder and prostate.

type	rectum	bladder
A type	hard stool	small (150ml)
B type	soft stool	medium size (200ml)
C type	hard and soft stool / empty	large (300ml) with balloon catheter

3 Clean-up

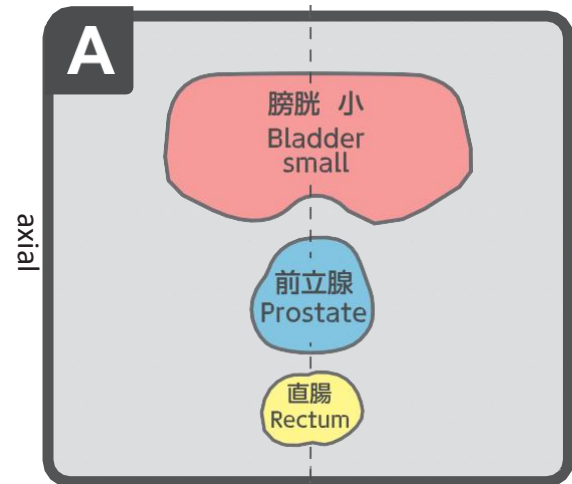
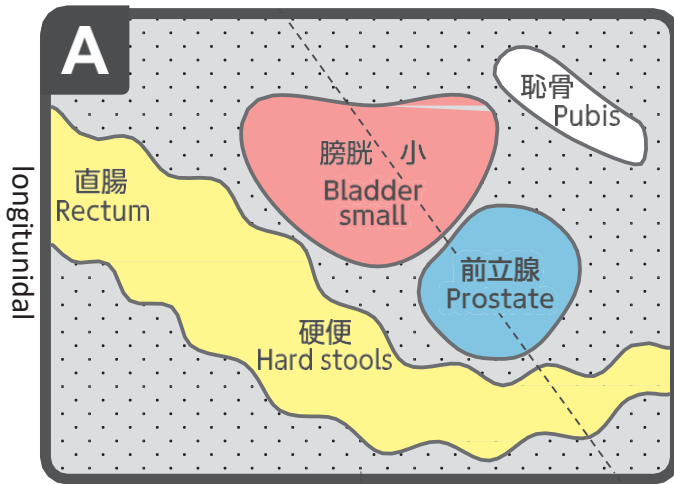


① Wipe remaining gel off with a wet tissue or similar.

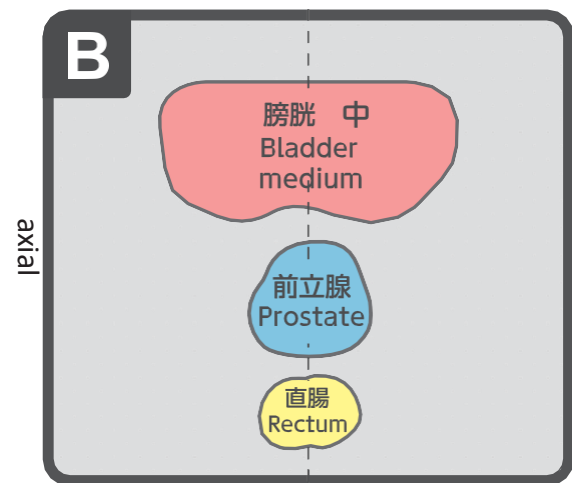
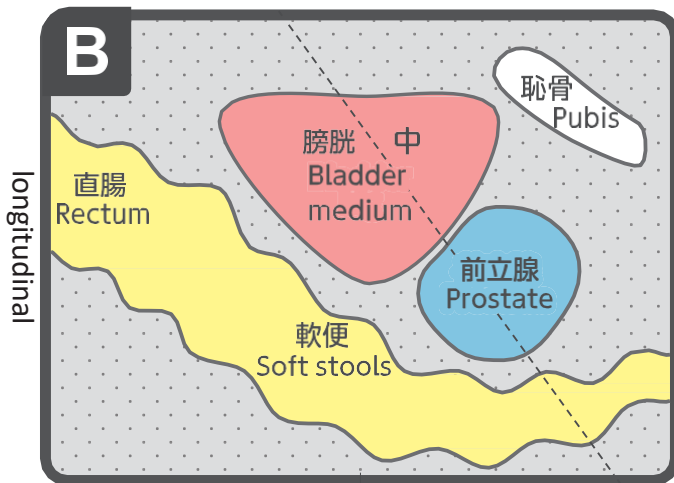
※ dried up gel left on the phantom may damage the phantom surface and affect the image quality

※see the next page for ultrasound images

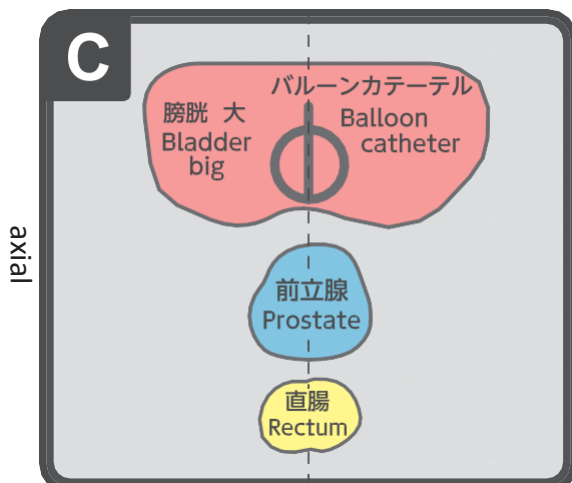
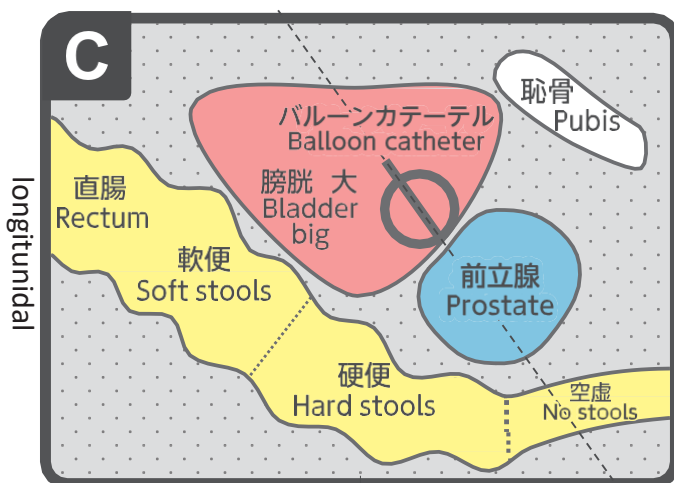
A type



B type



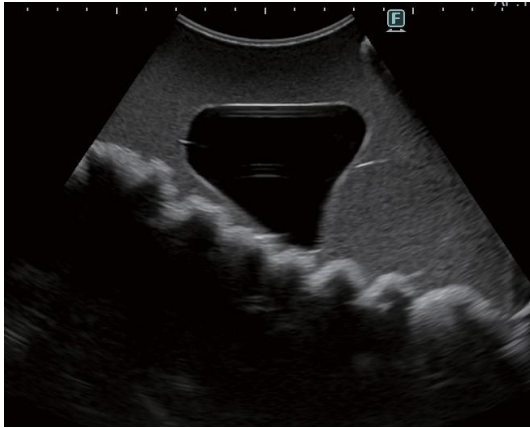
C type



※ see next page for probe placement

A type

longitudinal

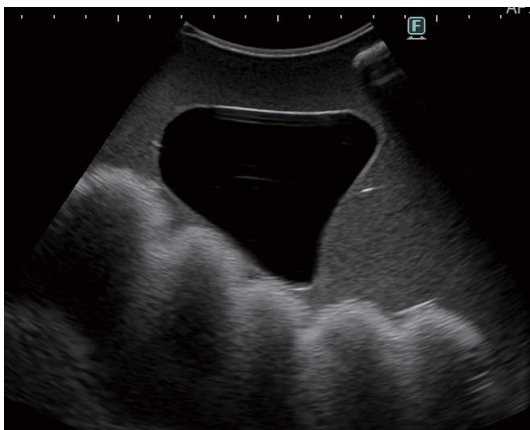


axial



B type

longitudinal



axial



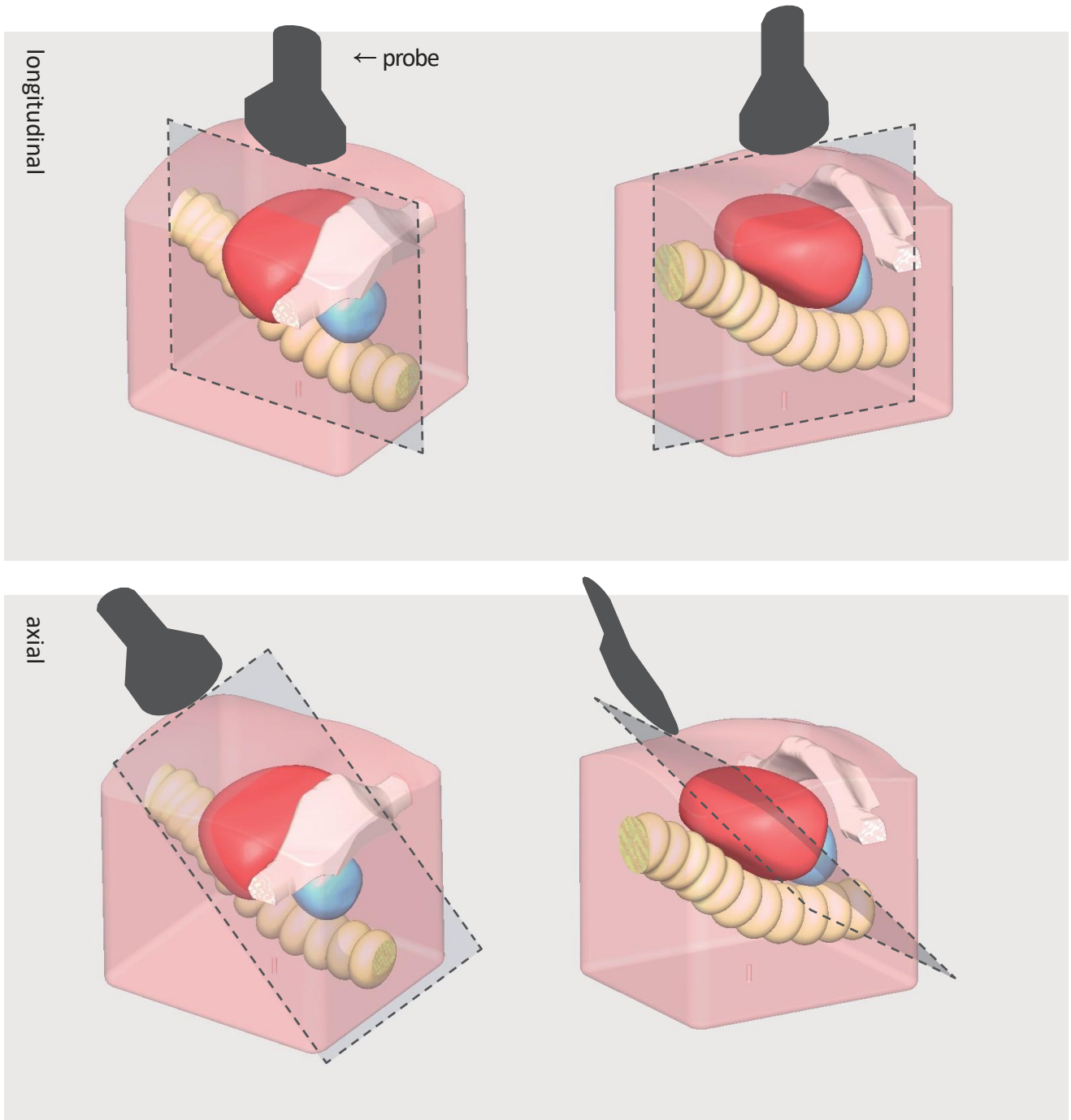
C type

longitudinal



axial





**Caution**

Do not place any printed materials on the phantom. The ink will be absorbed by the material and become irremovable.

■ USA, Canada, and South America



WEB • www.kkamerica-inc.com

E-MAIL • info@kkamerica-inc.com

TEL : 1-310-325-8860 **FAX** : 1-310-325-8867

3109 Lomita Boulevard, Torrance, CA 90505-5108, USA

■ Europe, Russia & Africa

Kyoto Kagaku Europe GmbH.

TEL : +49-69-5060-28160

De-Saint-Exupery-Str.10, 60549 Frankfurt, Germany

■ Worldwide Inquiries and Orders

KYOTO KAGAKU co.,LTD

URL: <http://www.kyotokagaku.com> **e-mail**: rw-kyoto@kyotokagaku.co.jp

TEL : +81-75-605-2510 **FAX** : +81-75-605-2519

15 Kitanechoya-cho, Fushimi-ku, Kyoto, 612-8388, JAPAN

The contents of the instruction manual are subject to change without prior notice.

No part of this instruction manual may be reproduced or transmitted in any form without permission from the manufacturer.

Please contact manufacturer for extra copies of this manual which may contain important updates and revisions.

Please contact manufacturer with any discrepancies, typos, or mistakes in this manual or product feedback. Your cooperation is greatly appreciated.



15 Kitanechoya-cho Fushimi-ku
Kyoto, Japan 612-8388
Telephone : +81-75-605-2510
F a x : +81-75-605-2519

Dear customer,

Note

Thank you for choosing our ultra sound phantom.

There may be a case that the surface of phantom is in a wet condition.

The ultra sound image will not be affected. In such case, wipe the surface with medical use alcohol. **Do not wipe the surface with strong solvent such as benzene.**

If you have any questions regarding this matter, please do not hesitate to contact us at any time.

Faithfully yours,

Kyoto Kagaku Co., Ltd.

Email: rw-kyoto@kyotokagaku.co.jp