

**Caution:**

Don't mark on the phantom with pen or leave printed materials contacted on its surface.  
Ink marks on the phantom will be irremovable.

# US-5 FAST/Acute Abdomen Phantom "FAST/ER FAN"

Focused Assessment with Sonography for Trauma

Production supervision:

Junji Machi, MD, PhD

University of Hawaii at Manoa and Kuakini Medical Center



## Contents

● Please read

General information ..... P. 1

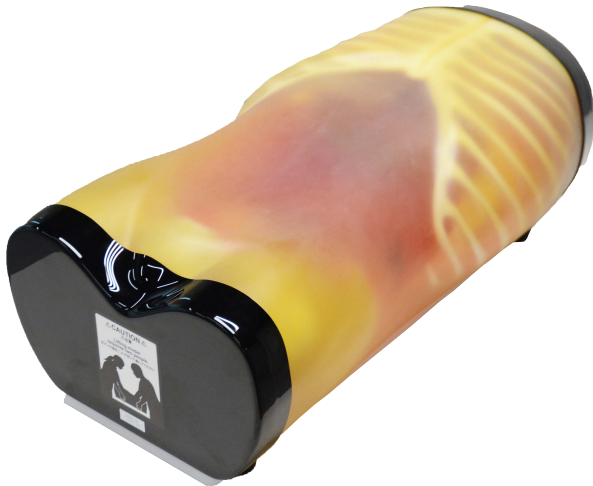
● Preparation

Before training ..... P. 2

● Training

Training session ..... P. 2

After training ..... P. 2



This innovative phantom facilitates repetitive training of FAST procedures as an adjunct to the ATLS primary survey.

● Features

- This phantom has been developed to provide simulated training in FAST ( Focused Assessment with Sonography for Trauma ) ; an ultrasound examination directed at identifying the presence of free intraperitoneal or pericardial fluid in the traumatic patients, which allows detecting the possible cause of shocks such as mass hemothorax, intraperitoneal hemorrhage or cardiac tamponade.
- Any ultrasound device with a convex probe can be used for the phantom.
- Inanimate tool for training of a novice to demonstration by an expert.
- Near real-size organs, structures and abnormal lesions.
- Durable long-life phantom materials.

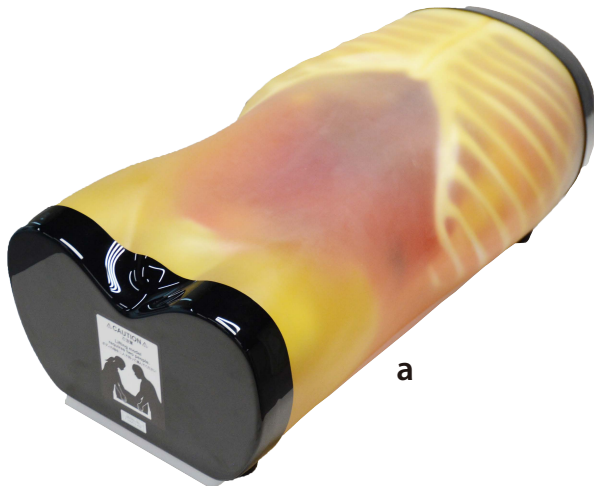
Movie Site



English Site

## Set includes

Before your first use, please ensure that you have all components listed below.



- a. FAST/Acute abdomen phantom ..... 1
- b. DVD tutorial manual ..... 1
- talcum powder ..... 1
- instruction manual (this leaflet) ..... 1



## DOs and DON' T s

### DO s

Handle with care.

The materials for phantom and models are special composition of soft resin. Please handle with care at all times.

#### Cleaning and care

Clean the phantom completely every time after the training.

The remaining gel may deteriorate the phantom.

Keep the phantom at room temperature, away from heat, moisture and direct sunlight.

### DON' T s

Never wipe the phantom or models with thinner or organic solvent.

Don' t mark on the phantom with pen or leave printed materials contacted on their surface.

Ink marks on the models will be irremovable.

Please note: The color of the phantom may change over time, though, please be assured that this is not deterioration of the material and the ultrasonic features of the phantom stay unaffected.

This phantom has a thin layer of coating for protective purposes which may cause minor wrinkling. However, it has no effect on the ultrasound image.

### 1 Before training



1. The Phantom is heavy. For your safety, always carry the phantom with two people.



2. Spread ultrasound gel over the phantom body.

### 2 Training session



The phantom can be scanned with actual ultrasound devices.

\* The map of simulated hemorrhages and tumors is on the backside of this manual.

#### FAST and Acute Abdomen Pathology



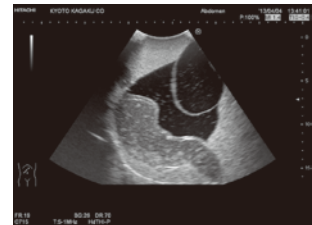
Cardiac tamponade



Right upper abdominal bleeding



Left upper abdominal bleeding



Pelvic bleeding

### 3 After training



Wipe the remaining gel completely by wet cloth.

If remaining gel gets dried up on the body, it may cause scratches and tears on the phantom material.



## Caution

Don't mark the phantom with pen or leave printed materials contacted on its surface. Ink marks on the phantom will be irremovable.

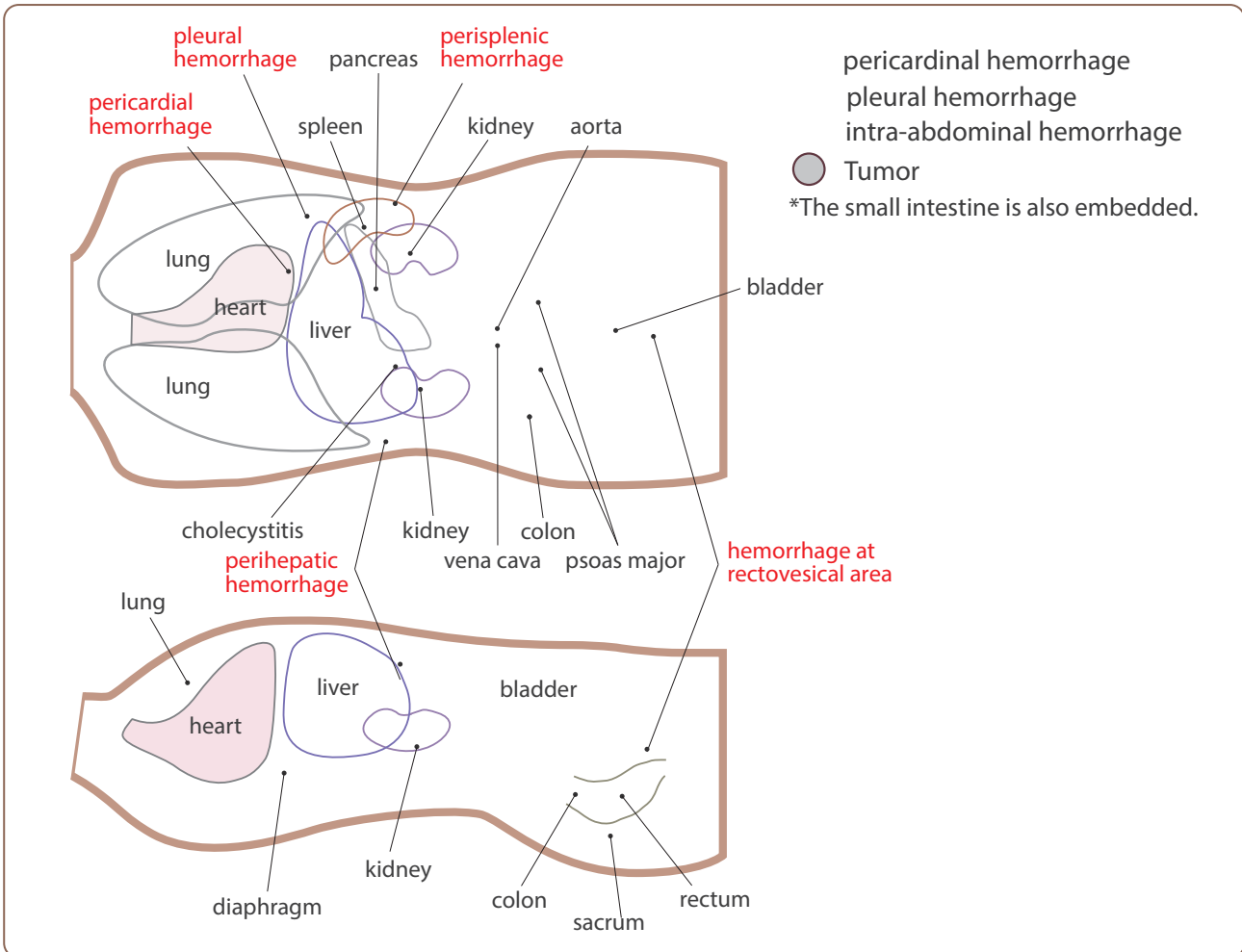
### Training items:

- FAST procedures:

Internal hemorrhage at perihepatic, perisplenic, pelvis and pericardium area.

- Sonography for acute patients:

Internal hemorrhage at pericardial, bilateral chambers as well as intra-abdominal hemorrhage around the liver, the spleen and the urinary bladder. Pathologies including cholecystitis, an aortic aneurysm, a lesion on the colon.



The contents of this manual are subject to change without prior notice.

No part of this instruction manual may be reproduced or transmitted in any form without permission from the manufacturer. Please contact manufacturer for extra copies of this manual which may contain important updates and revisions.

Please contact manufacturer with any discrepancies, typos, or mistakes in this manual or product feedback. Your cooperation is greatly appreciated.

#### ■ Main Office and Factory (World Wide)

 **KYOTO KAGAKU co.,LTD**

WEB • [www.kyotogagaku.com](http://www.kyotogagaku.com)

E-MAIL • [rw-kyoto@kyotokagaku.co.jp](mailto:rw-kyoto@kyotokagaku.co.jp)

15 kitanechoya-cho Fushimi-ku Kyoto 612-8388, Japan

TEL: +81-75-605-2510

FAX: +81-75-605-2519

#### ■ North and South American regions:

 **KKAmerica**  
Kyoto Kagaku America Inc.

WEB • [www.kkamerica-inc.com](http://www.kkamerica-inc.com)

E-MAIL • [info@kkamerica-inc.com](mailto:info@kkamerica-inc.com)

3109 Lomita Boulevard, Torrance, CA 90505-5108, USA

TEL: +1-310-325-8860

(Toll-free in North America: 877-648-8195)

FAX: +1-310-325-8867



15 Kitanechoya-cho Fushimi-ku  
Kyoto, Japan 612-8388  
Telephone : +81-75-605-2510  
F a x : +81-75-605-2519

Dear customer,

**Note**

Thank you for choosing our ultra sound phantom.

There may be a case that the surface of phantom is in a wet condition.

The ultra sound image will not be affected. In such case, wipe the surface with medical use alcohol. **Do not wipe the surface with strong solvent such as benzene.**

If you have any questions regarding this matter, please do not hesitate to contact us at any time.

Faithfully yours,

Kyoto Kagaku Co., Ltd.

Email: [rw-kyoto@kyotokagaku.co.jp](mailto:rw-kyoto@kyotokagaku.co.jp)