

US-14a

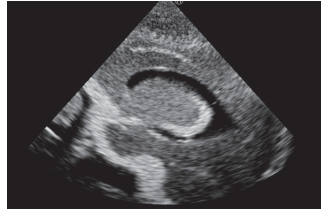
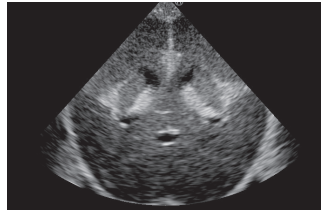


Ultrasound Neonatal Head Phantom (Normal Type)

World's first ultrasound neonatal head phantom with key anatomies

Product Supervision

Charlotte Henningsen,
MS, RT(R), RDMS, RVT, FSDMS, FAIUM
Chair & Professor - Sonography Department
Adventist University of Health Sciences



FEATURES

Cranial or head ultrasound is one of the most difficult scanning skills, and there are few opportunities for training. This head phantom features an accurate depiction of a newborn's cerebral anatomy, and facilitates a realistic user experience with its life-like soft touch.

SKILLS

Scanning of brain anatomy in sagittal (angled parasagittal), coronal and transverse planes via any fontanel

Palpation of anterior, posterior and mastoid fontanels

ANATOMY

| | | |
|--------------------|-------------------|------------------|
| skull | cerebrum | third ventricle |
| anterior fontanel | cerebellum | fourth ventricle |
| posterior fontanel | brain-stem | septum lucidum |
| mastoid fontanels | lateral ventricle | |

DESCRIPTIONS

SPECIFICATIONS

Size: W13 x D13 x H17 cm
W5.1 x D5.1 x H6.7 inch

Weight: 1.5kg / 3.3lbs

MATERIALS

Polyurethane elastomer
Latex free

SET INCLUDES

- 1 ultrasound phantom
- 1 pillow
- 1 talcum powder
- 1 storage case
- 1 instruction manual

* Ultrasound scanner is not included.

US-14b



Ultrasound Neonatal Head Phantom (Abnormal Type)

World's first ultrasound neonatal head phantom with hydrocephalus

Product Supervision

Charlotte Henningsen,
MS, RT(R), RDMS, RVT, FSDMS, FAIUM
Chair & Professor - Sonography Department
Adventist University of Health Sciences



FEATURES

This head phantom is designed to demonstrate Hydrocephalus. The shape of the skull is altered due to intracranial pressure.

SKILLS

Scanning of brain anatomy in sagittal (angled parasagittal), coronal and transverse planes via any fontanel

Palpation of fontanels

ANATOMY

| |
|---------------------------------|
| skull |
| anterior fontanel |
| posterior fontanel |
| hypertrophied lateral ventricle |

DESCRIPTIONS

SPECIFICATIONS

Size: W13 x D14 x H20 cm
W5.1 x D5.5 x H7.9 inch

Weight: 1.5kg / 3.3lbs

MATERIALS

Polyurethane elastomer
Latex free

SET INCLUDES

- 1 ultrasound phantom
- 1 pillow
- 1 talcum powder
- 1 storage case
- 1 instruction manual

* Ultrasound scanner is not included.