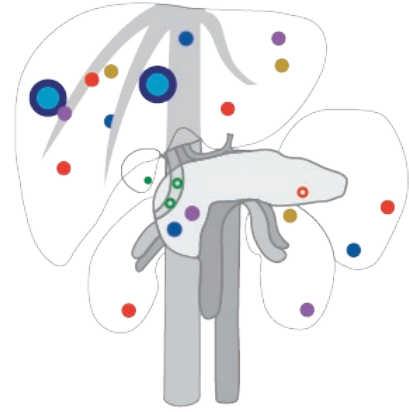




NEW

Dual Modality Human Abdomen Phantom (CT, Ultrasound)

This Multi-Modality Phantom is a suitable item to conduct studies and training of fusion imaging for a wide range of clinical applications (CT & Ultrasound)



[Embedded targets]	Liver HU170	Gall HU120	Pancreas HU150	Spleen HU150	Kidney(R) HU150	Kidney(L) HU150
anechoic ● 10mm ○ 3mm	3 HU150	1 HU150	1 HU150	1 HU150	1 HU150	1 HU150
hypoechoic ● 10mm	2 HU150					1 HU150
intermediate echogenicity ● 10mm	2 HU150		1 HU150			1 HU150
hyperechoic ● 10mm	2 HU150		1 HU150			1 HU150
double edge inferior: hyperechoic, anterior: anechoic ● 20mm	2 HU150					
gallstones ● 5mm ○ 3mm		1 HU170				2 HU170

FEATURES/SKILLS

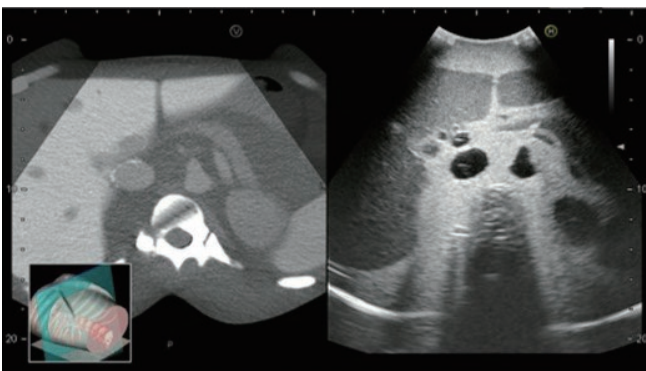
- 1 | Fusion image generation training
- 2 | Mapping for biopsy (invasive procedures are not possible with this phantom)
- 3 | Surgical planning
- 4 | Radiation therapy planning
- 5 | Training for scanning skills in Ultrasound and CT

Anatomy

lung / kidneys (right and left) / gallbladder / aorta/ liver (portal vein, bile duct, hepatic artery, hepatic vein) / spleen / pancreas (pancreatic duct) / inferior aorta / spine / ribs

Pathologies

- | Liver lesions (cysts, solids)
- | Gallbladder and bile duct stones
- | Pancreatic tumors
- | Spleen lesions
- | Left and right kidney lesions



Comparison of CT-based simulated ultrasound and real ultrasound

SPECIFICATIONS

Size: W29 x D19 x H31 cm Weight: 12 kg/26.5 lbs
W11.4 x D7.5 x H12.2 in.

DESCRIPTIONS

SET INCLUDES

- 1 dual modality abdominal phantom
- 1 positioning pillow
- 1 talcum powder
- 1 sample CT images (DVD)
- 1 storage case
- 1 instruction manual