

MW61



NEW

Digital EYE Examination Simulator

MW61A



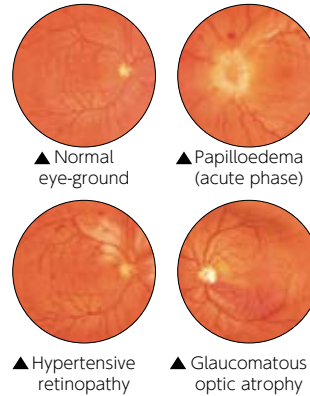
Digital EYE Examination Simulator (2 steps)

Innovative Eye Examination Simulator

Our standard Eye Examination Simulators are utilized by many simulation centers. This digital version of the Eye Examination Simulator is an upgrade to showcase various innovative features.

Product Supervision

Japan Society for Medical Education
Working Group with the cooperation of:
Kansai Medical University Department of Ophthalmology



Selection by button The back screen enables the instructor to monitor students and track the cases during examinations

FEATURES

- 1 | 40 cases of fundus images (including 10 common diseases) are pre-installed for eye examination training and viewable on 160dpi monitor
- 2 | Custom fundus image can be programmed into the simulator via USB
- 3 | For eye examination training with all types of direct ophthalmoscopes

SKILLS

- | Fundus examination with real ophthalmoscope

CASES

- | Normal eye-ground
- | Hypertensive retinopathy: arteriolar vasoconstriction grade 3, arteriolar sclerosis grade 1, hemorrhages and cotton wool spots, simple vein concealment
- | Simple/background diabetic retinopathy: microaneurysm, hemorrhages and hard exudates
- | Papilloedema (chronic phase)
- | Papilloedema (acute phase)
- | Glaucomatous optic atrophy: glaucomatous optic disc cupping and nerve fiber defect
- | Retinal vein occlusion (acute phase): flame-shaped hemorrhage and cotton wool spots

- | Retinal vein occlusion (after retinal laser photocoagulation)
- | Toxoplasmosis: retinochoroiditis
- | Age-related macular degeneration: macular exudates and subretinal hemorrhage

- | 3 types of Enlarged optic disc recess
- | Enlarged optic disc recess (Tilted disc)
- | Enlarged optic disc recess (Infiltrate spot)
- | 2 types of Drusen
- | 2 types of Enlarged optic disc recess with drusen
- | Macular Drusen
- | Optic disc haemorrhage

NEW CASES

- | Haemorrhage
- | 2 types of Chorioretinal atrophy
- | 4 types of Vitreous clouding
- | 2 types of Retinal nerve fiber layer defect
- | Pigmentation
- | Haemorrhage with Vascular white sheath
- | Photocoagulation spots
- | 3 types of Epiretinal membrane
- | Keratoconus
- | Macular Degeneration
- | Megalopapilla; eye exudate

DESCRIPTIONS

For product codes of the alternate skin tone versions of this model, please refer to www.kyotokagaku.com.

SPECIFICATIONS

Size: W42 x D21.5 x H38 cm / W16.5 x D8.5 x H15 in. Weight: 2.5kg / 5.5lbs
Power Consumption : 2.5W

SET INCLUDES

- | | |
|----------------------------------|---|
| 1 manikin head and shoulder | 1 USB flash drive (with case installer) |
| 1 pupil switch | 1 instruction manual |
| - 3 steps (2, 3.5, 5mm diameter) | |
| - 2 steps (3.5, 8mm dia.) *M82A | |
| 1 power cable / USB cable | |

MATERIALS

*Latex is included in the blower

SET VARIATIONS

- | | |
|-------------|------------------------|
| 11444-000 | MW61 light skin tone |
| 11444-000-D | MW61 dark skin tone |
| 11444-000-M | MW61 medium skin tone |
| 11444-999 | MW61A light skin tone |
| 11444-999-D | MW61A dark skin tone |
| 11444-999-M | MW61A medium skin tone |

* ophthalmoscope is not included.